

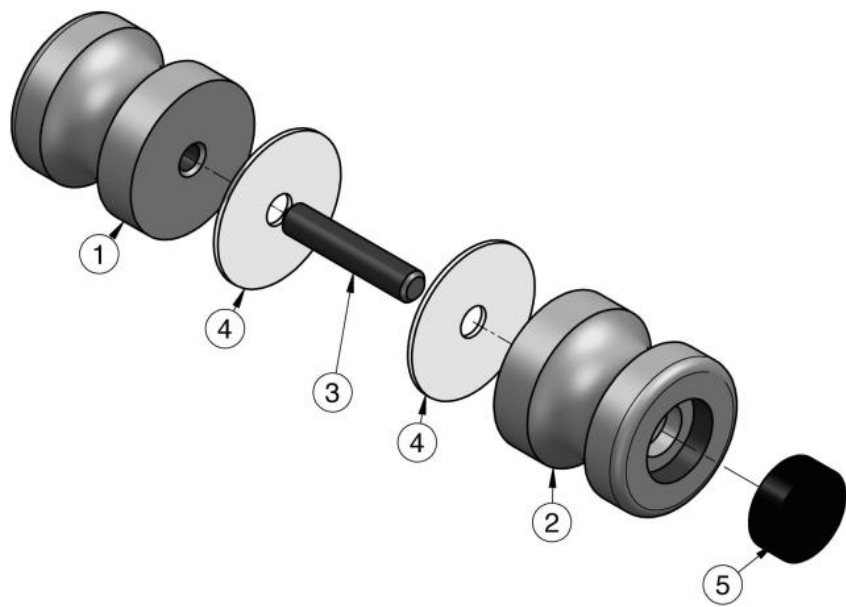
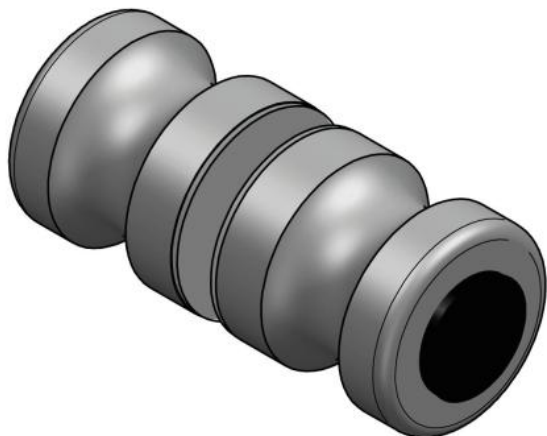
59.56303.07

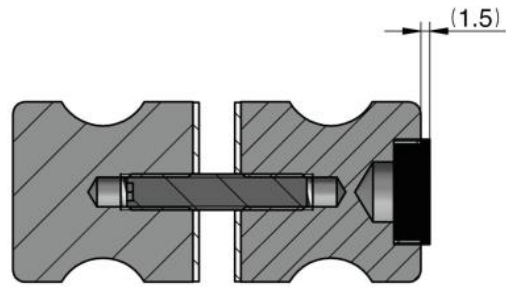
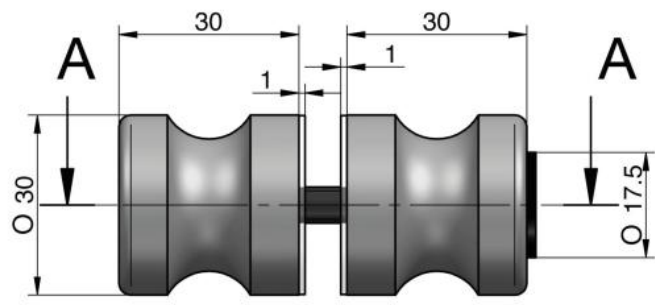
Glastürknopf Serie 56, mit einseitigem Anschlagspuffer

| | |
|-----------------------|-------------------------|
| Material: | Messing |
| Ausführung: | BlackLine RAL 9005 matt |
| Montage: | Glasmontage (Paar) |
| Glasstärke: | 6 - 10 mm |
| Verkaufseinheit (VE): | Pr |
| Packungseinheit (PE): | 1.00 |
| Form: | sanduhrförmig |
| Masse: | Ø 30 mm |
| Mass A: | 30 mm |
| Mass B: | 30 mm |
| Glasbearbeitung: | Glasbohrung : Ø10 mm |
| Gewinde: | M6 |

inkl. Gummidichtungen







COUPE A-A