

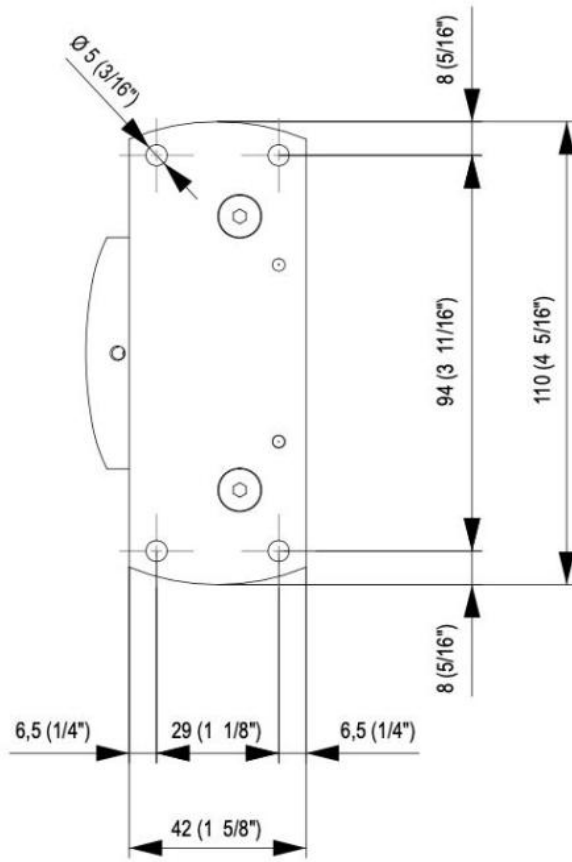
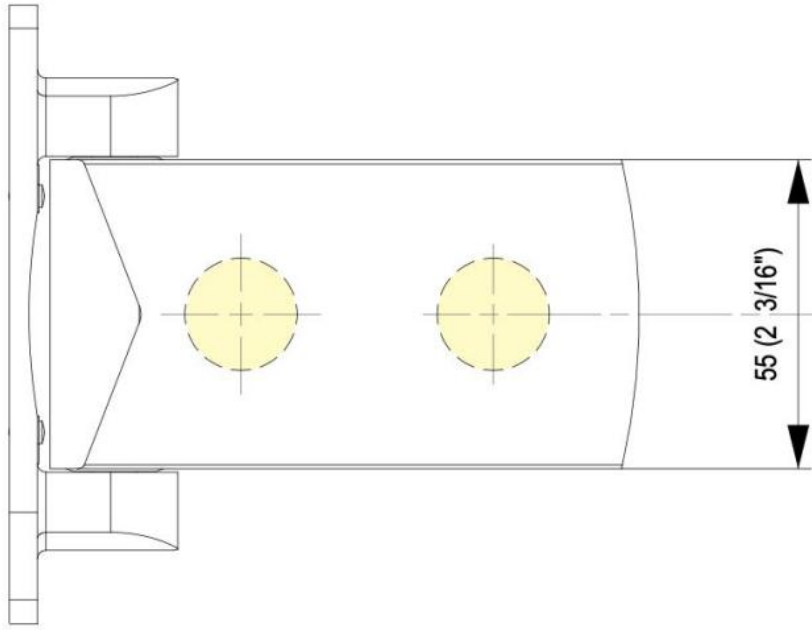
## 31.80600.21

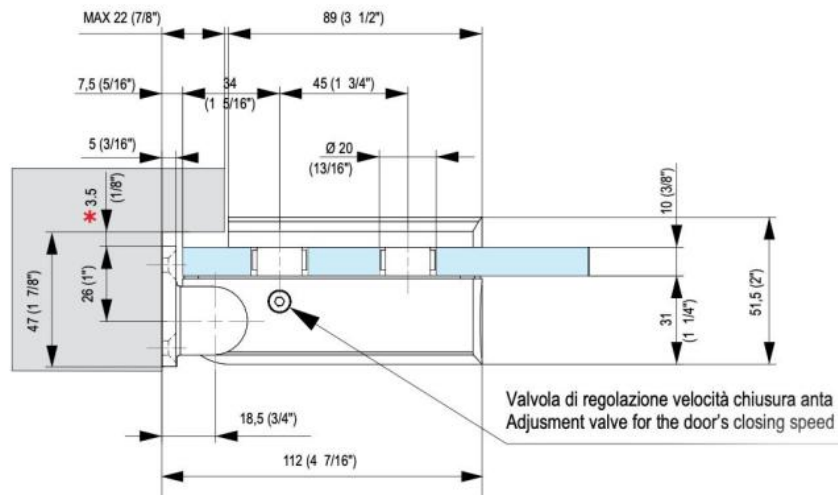
### Hydraulic hinge Biloba BL 8060

Material: aluminium  
Finish: chrome effect  
Mounting: glass/wall  
Glass thickness: 8 / 10 / 12 mm  
Sales unit (SU): St  
Unit package: 2.00  
Carrying capacity: 100 kg/pair

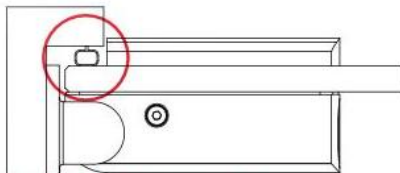
with adjustable closing speed, with locking device 0° and 90°, automatic closing from 80°, max. door width 1000 mm, for temperatures from -15°C to + 40°C. Note: Forced opening over 95° could lever out the door, we recommend the installation of a door stopper







- \* Distanza minima da filo muro per consentire rotazione vetro
- Distancia mínima de hilo pared, para facilitar la rotación del vidrio
- Minimum distance from wall edge in order to facilitate glass rotation
- Mindestdistanz von der Wandkante, um die Glasrotation zu erleichtern
- Distance minimum de l'arrête du mur pour permettre la rotation du verre



In caso di utilizzo guarnizione, considerarne l'ingombro.

Si utiliza el herraje, considerar su tamaño.

In case of gasket's usage, consider its overall dimension.

Im Fall von Dichtungsverwendung, ihre Maße berücksichtigen.

En cas d'utilisation d'un joint, tenir compte de son encombrement