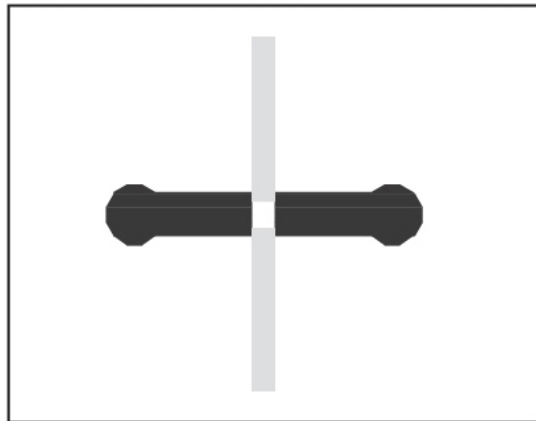


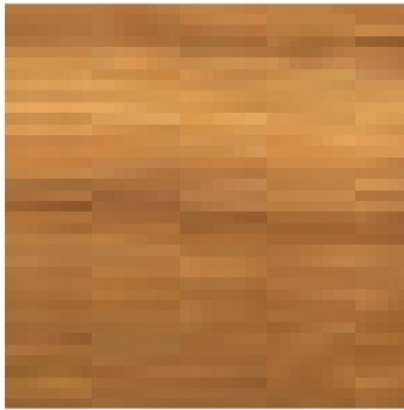
57.50001.82

Pull handle (solid wood and stainless steel)

Material: oak
Finish: oiled
Mounting: glass assembly (pair)
Glass thickness: 8 - 13.52 mm
Sales unit (SU): Pr
Unit package: 1.00
Shape: round
Measures: Ø 30 mm, L = 300 mm
Measure A: 300 mm
Measure B: 200 mm
Measure C: 45 mm
Measure D: 30 mm
Glass processing: Glass drill hole : Ø13 mm







Eiche / chêne