

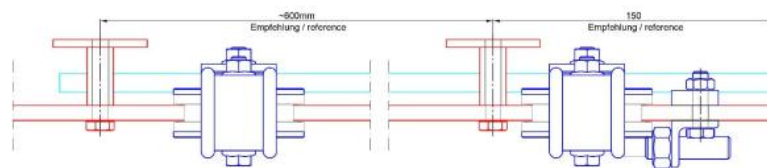
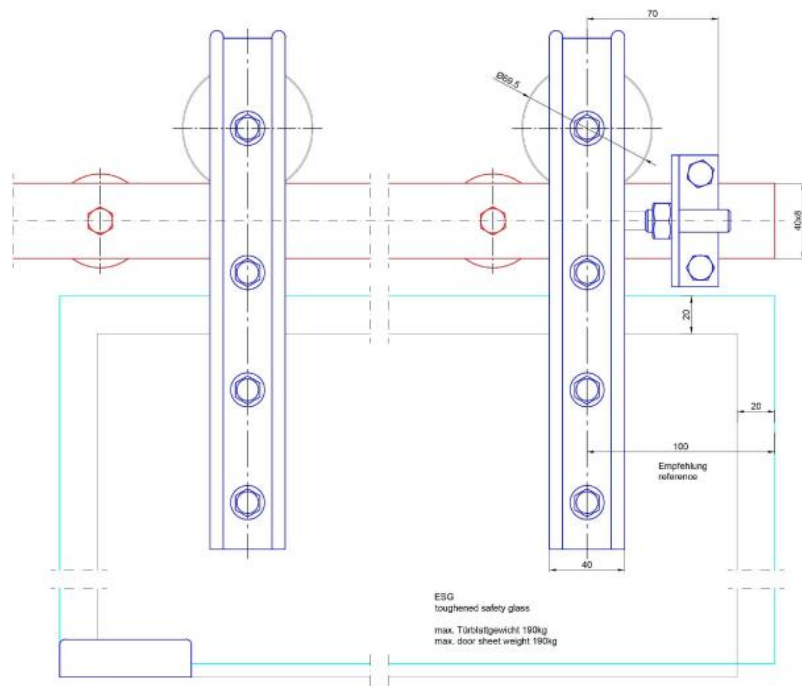
38.00081.52

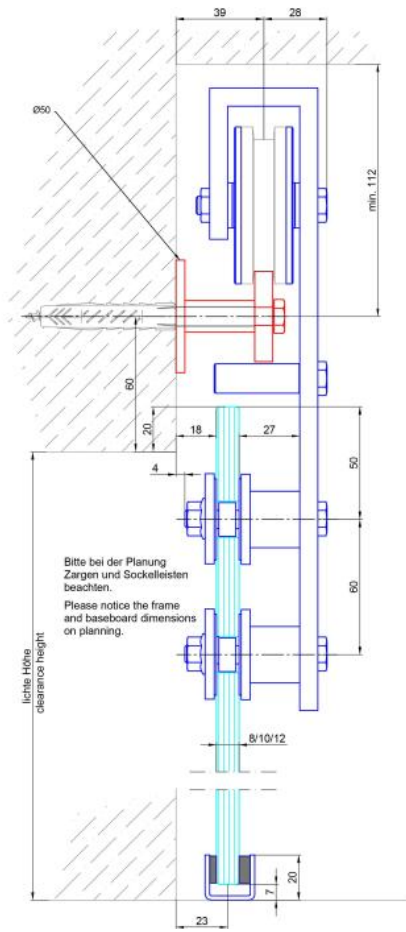
MWE Steel 2, Glasschiebetür Komplet-Set

Material: steel
Finish: browned
Mounting: wall assembly
Glass thickness: 8 - 12.76 mm
Sales unit (SU): St
Unit package: 1.00
Bar length (L): 2000 mm
Carrying capacity: 190 kg/set

Set enthält: 1 x Laufschiene 2000 mm, 4 x Wandbefestigung, 2 x Rollwagen, 2 x Stopper, 1 x Bodenführung







Empfehlung
 100 mm

