

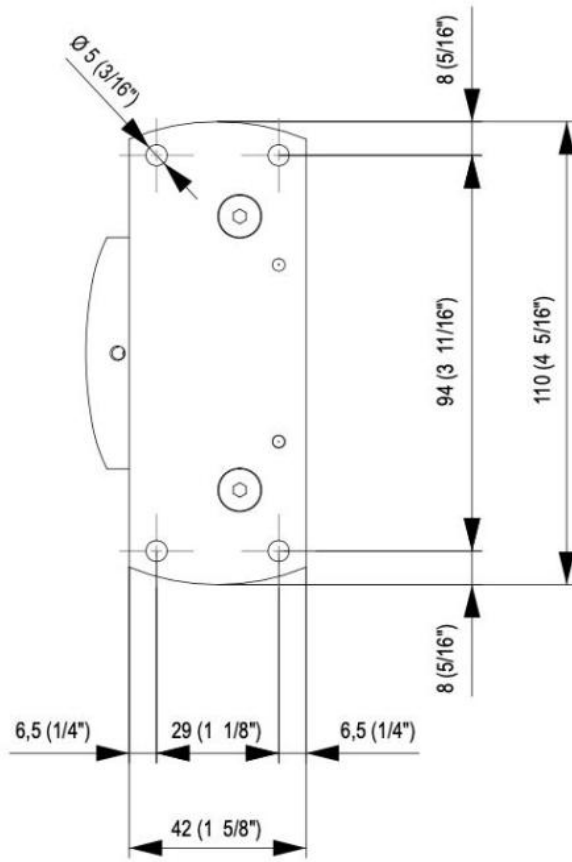
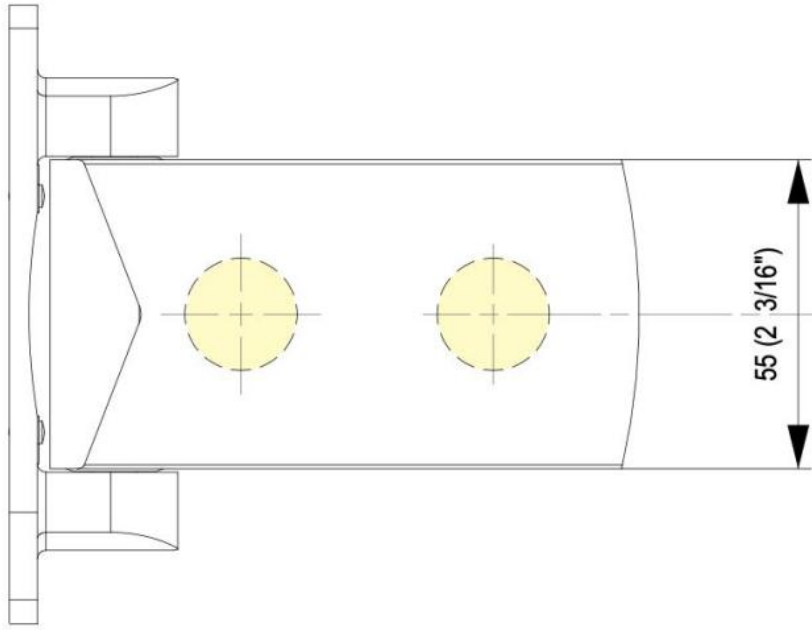
## 31.80601.24

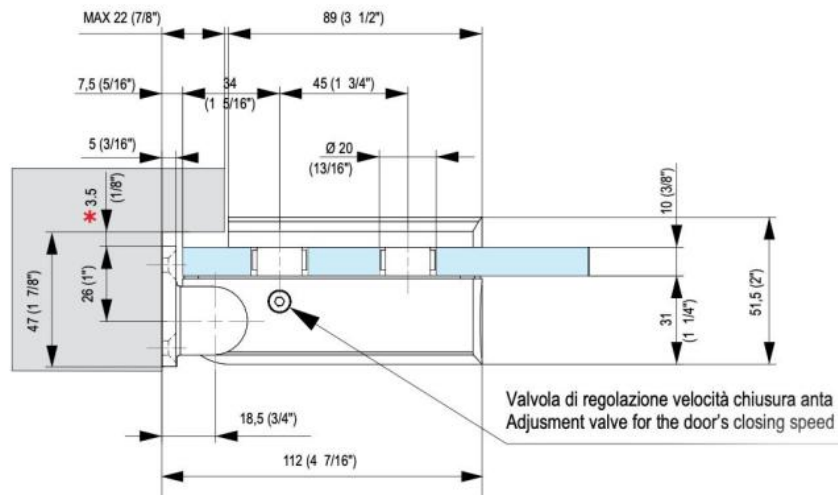
### Hydraulic hinge Biloba BL 8060 BT for saunas, steam rooms and swimming pools

Material: aluminium  
Finish: inox effect  
Mounting: glass/wall  
Glass thickness: 8 / 10 / 12 mm  
Sales unit (SU): St  
Unit package: 1.00  
Carrying capacity: 100 kg/pair

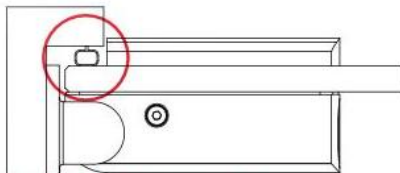
with adjustable closing speed, with 0° and 90° detent, max. door width 1000 mm, automatic closing from 80°, for temperatures from -15°C to +100°C. Note: Forced opening above 95° could lever the door open, we recommend installing a door stopper. O-ring seals of the hydraulic circuit made of Viton, spindle made of stainless steel AISI 420, inner body anodised with special deep oxidation (20 microns)







- \* Distanza minima da filo muro per consentire rotazione vetro
- Distancia mínima de hilo pared, para facilitar la rotación del vidrio
- Minimum distance from wall edge in order to facilitate glass rotation
- Mindestdistanz von der Wandkante, um die Glasrotation zu erleichtern
- Distance minimum de l'arrête du mur pour permettre la rotation du verre



In caso di utilizzo guarnizione, considerarne l'ingombro.

Si utiliza el herraje, considerar su tamaño.

In case of gasket's usage, consider its overall dimension.

Im Fall von Dichtungsverwendung, ihre Maße berücksichtigen.

En cas d'utilisation d'un joint, tenir compte de son encombrement