

31.80304.27

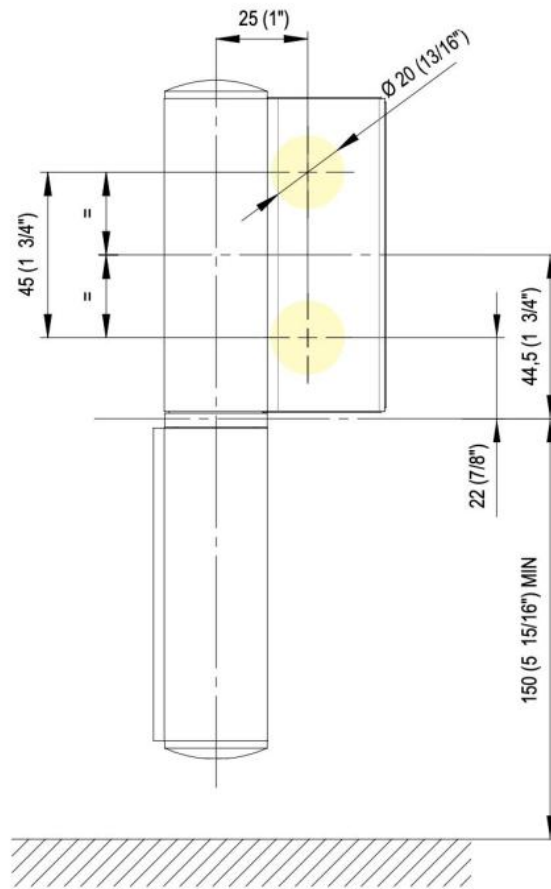
Hydraulic hinge EVO EV 835E11 N with integrated door closer, self-closing from an opening angle of 160°

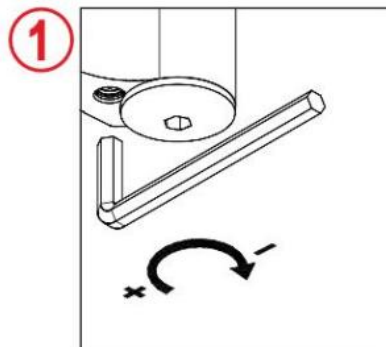
Material: aluminium
Ausführung: black anodized
Montage: glass/wall, DIN left
Glasstärke: 8 - 19 / 21.52 mm
Verkaufseinheit (VE): St
Packungseinheit (PE): 1.00
Tragkraft: 120 kg/pair

can be installed on doors with frame profile, rebate depth 30 - 50 mm, with adjustable closing speed, with constant braking control, with 180° locking, min. door width 800 mm, max. door width 1200 mm, for temperatures from -15°C to + 40°C. The hinge has a pre-tension, therefore a closing stop is required

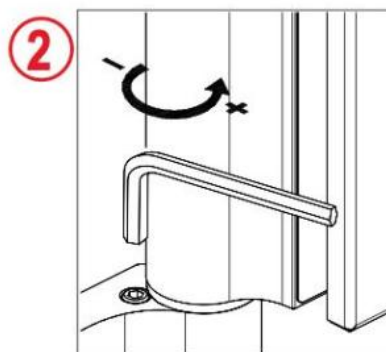








Regolazione scatto finale
 Ajuste del resorte final
 Final latch adjustment
 Regulierung der Endschwung
 Réglage de verouillage final



Regolazione della
 velocità di chiusura
 Ajuste de la velocidad
 de cierre
 Closing speed adjustment
 Regulierung der
 Schließgeschwindigkeit
 Réglage de la vitesse
 de fermeture

36 (1 7/16")

21 7/8"

