

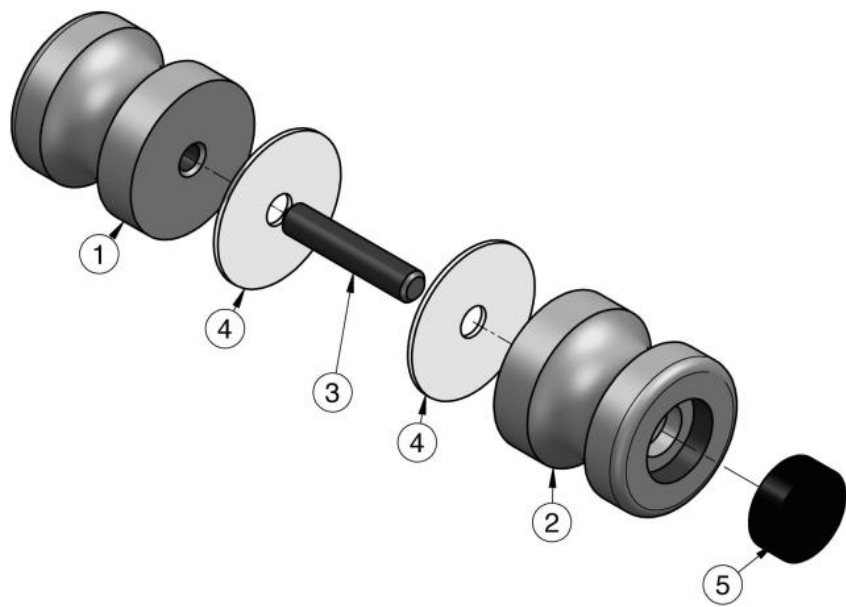
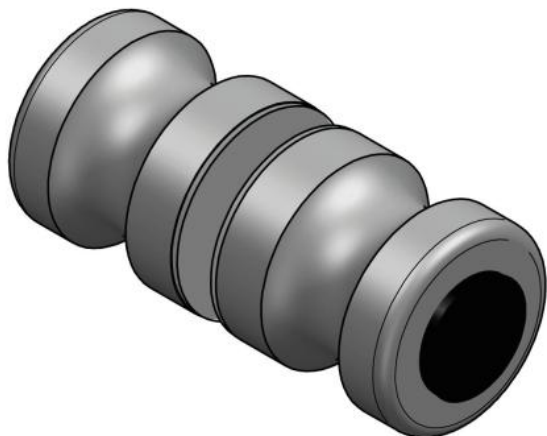
59.56303.04

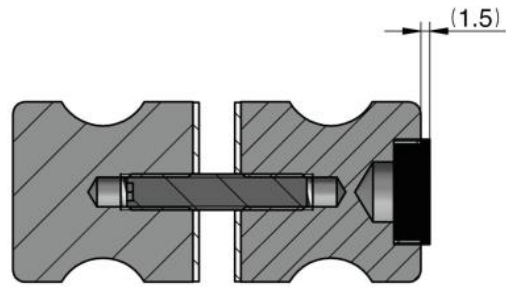
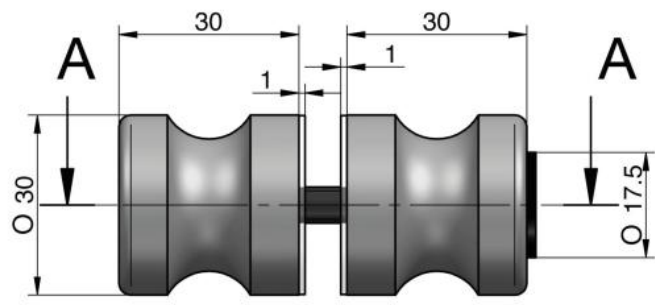
Glass doorknob series 56, with stop buffer on one side

Material: brass
Finish: inox effect
Mounting: glass assembly (pair)
Glass thickness: 6 - 10 mm
Sales unit (SU): Pr
Unit package: 1.00
Shape: hourglass shape
Measures: Ø 30 mm
Measure A: 30 mm
Measure B: 30 mm
Glass processing: Glass drill hole : Ø10 mm
Thread: M6

incl. rubber seals







COUPE A-A