

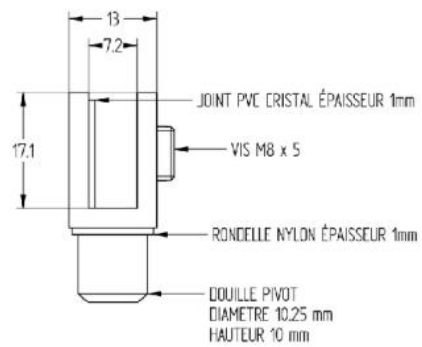
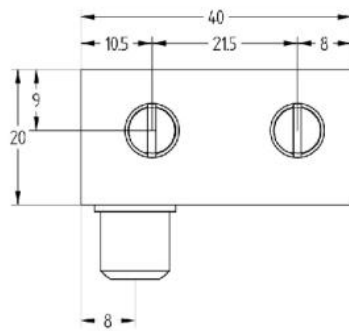
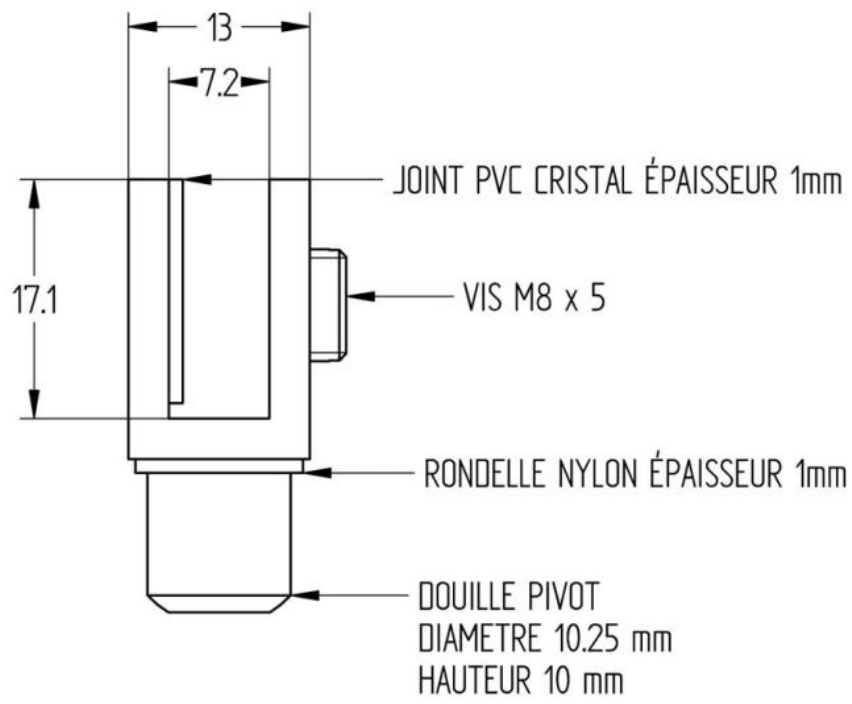
62.18100.03

Drehbares Vitrinenscharnier zum Klemmen

Material: brass
Finish: golden polished
Mounting: glass assembly
Glass thickness: 6 mm
Sales unit (SU): Pr
Unit package: 1.00
Shape: square
Measures: 40 x 20 x 13 mm
Measure A: 20 mm
Measure B: 40 mm
Measure C: 13 mm
Measure D: 3 mm
Carrying capacity: 8 kg/pair

mit 2 Befestigungsschrauben, Zapfen und Hülse, 1 Paar = 1 links + 1 rechts





www.fonsegrive.com

