

Elegant filigree design – fit and bonding solution

Main features

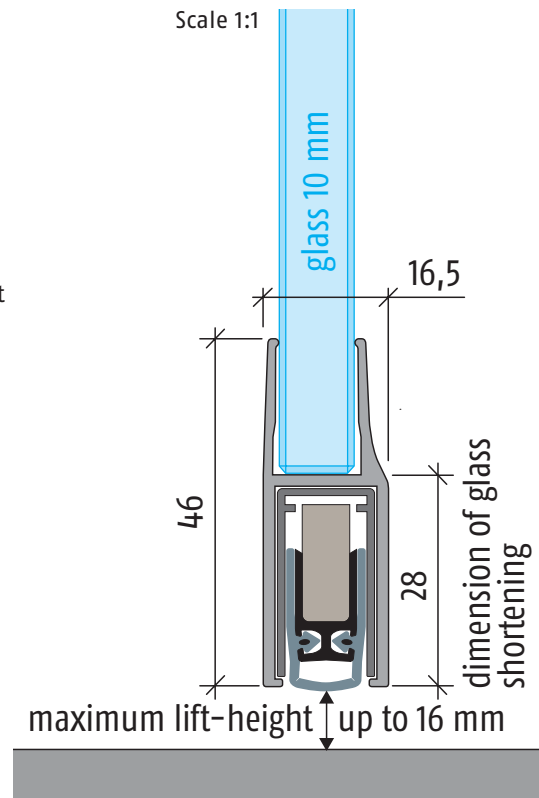
- lift height 16 mm
- for 1 and double wing/folding all-glass doors of 10 mm glass thickness
- Planet drop-down seal for fit and bonding
- automatic compensation to inclined floors
- acoustic isolation of 48 dB (at 7 mm clearance from door to floor)
- can be shortened to the next shorter length in stock
- high-grade silicone lip, simple lift height adjustment
- 5 years warranty

Versions

- **Planet KG-F10**
- fire-retardant and smoke-shielding, **Planet KG-F10 FH+RD/48dB**
- sliding doors
- special versions on request

Surfaces

- colorless anodized EV1
- similar: Niro anodized mat finish



Advertising text

Planet KG-F10

Automatic door drop-down seal **Planet KG-F10**, unilateral release with parallel drop-down and automatic compensation in case of an inclined floor, protection profile colorless EV1 or similar Niro anodized mat finish, to fit and glue on, seal height up to 16 mm. Lip made of silicone. Protection profile and profile made from aluminum 16,5×46 mm, incl. covering plate on lock side (for double wing/folding doors).

Planet KG-F10 FH+RD/48dB, fire-retardant and smoke-shielding

Automatic door drop-down seal **Planet KG-F10 FH/RD/48dB**, suitable for fire-retardant and smoke-shielding doors. Sound absorption value SK 1-3, unilateral release with parallel drop-down and automatic compensation in case of an inclined floor, protection profile colorless EV1 or similar Niro anodized mat finish, to fit and glue on, seal height up to 16 mm. Lip made of self-extinguishing silicone. Protection profile and profile made from aluminum 16,5×46 mm, incl. covering plate on lock side (for double wing/folding doors).

Technical specifications

protection profile material:	aluminium, 16,5×46 mm, colorless EV1 or similar Niro anodized mat finish
seal profile:	high-grade silicone or high-grade self-extinguishing silicone
seal height:	up to 16 mm
sound absorption value:	48 dB at 7 mm clearance from door to floor, 46 dB at 14 mm clearance from door to floor on the release knob with an Allen key 3 mm
lift height adjustment:	459, 584, 709, 834, 959, 1084, 1209, 1334 mm
lengths in stock:	on request up to 2000 mm, sliding doors up to 1600 mm
special lengths:	unilaterally on hinge side
release:	up to 125 mm
can be shortened:	to be glued on
fastening:	stainless steel, to drive home, 20×20 mm
stopping plate:	on request
test approvals:	

Elegant filigree design – fit and bonding solution

Order specifications

- **Planet KG-F10 RD/48dB**
Part number 38 xxx*-F10
- **Planet KG-F10 FH+RD/48dB**
Part number 39 xxx*-F10
- **Planet KG-F10 sliding door**
Part number 37 xxx*-F10

*xxx = refer to price list for profile lengths

Accessories / options

- **Planet stopping plate**
Part number 900 014
- **cut the Planet on fixed dimension**
Part number 900 225
- **set of cover plates Planet**
Part number 900 252

hinge side



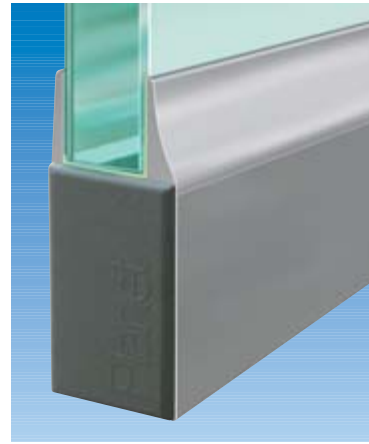
Planet KG-F10, fitted and pasted on

lock side



Planet KG-F10, fitted and pasted on

lock side



Planet KG-F10 with cover plate on lock side



Assembly in all-glass doors and partitions



Planet KG-U application in an office building

SWISS MADE

► refer to chapter mounting instructions for further information of Planet KG-F10