

For 1 and double wing/folding all-glass doors and for retrofitting of all other doors

Main features

- lift height 16 mm
- Planet KG-S laterally pasted with UV cement or double adhesive tape
- Planet drop-down seal cemented in the S protection profile
- Planet KG-S with UV cement on lower glass edge (building side)
- unilateral release with parallel drop-down
- automatic compensation to inclined floors
- acoustic isolation of 48 dB (at 7 mm clearance from door to floor)
- can be shortened to the next shorter length in stock
- high-grade silicone lip, simple lift height adjustment

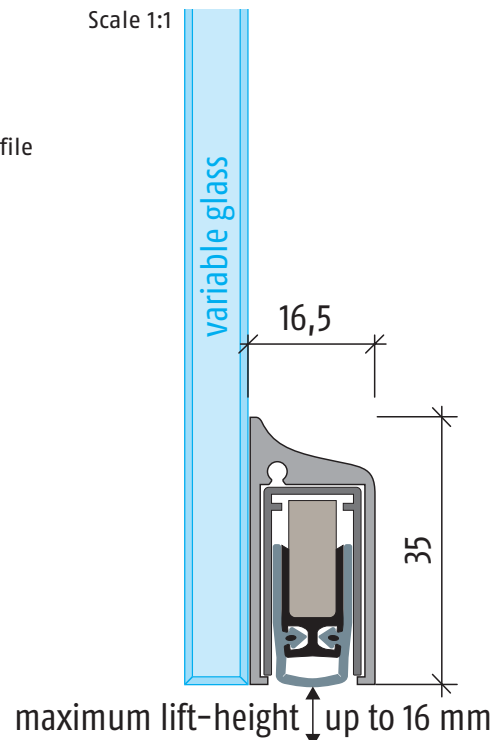
Versions

- Planet KG-S
- fire-retardant and smoke-shielding, **Planet KG-S FH+RD/48dB**
- sliding doors
- special versions on request

Surfaces

- colorless anodized EV1
- similar: Niro anodized mat finish

Scale 1:1



Advertising text

Planet KG-S, suitable as retrofit kit on glass doors

Automatic door drop-down seal **Planet KG-S**, unilateral release with parallel drop-down and automatic compensation in case of an inclined floor, protection profile colorless EV1 or similar Niro anodized mat finish, to be cemented laterally, seal height up to 16 mm. Lip from silicone. Protection profile and profile made from aluminum 16,5×35 mm, incl. covering plate on lock side (for double wing/folding doors).

Planet KG-S FH+RD/48dB, fire-retardant and smoke-shielding

Automatic door drop-down seal **Planet KG-S FH+RD/48dB**, unilateral release with parallel drop-down and automatic compensation in case of an inclined floor, protection profile colorless EV1 or similar Niro anodized mat finish, to be cemented laterally, seal height up to 16 mm. Lip from silicone. Protection profile and profile made from aluminum 16,5×35 mm, incl. covering plate on lock side (for double wing/folding doors).

Technical specifications

protection profile material:	aluminium, 16,5×35 mm mm, colorless EV1 or similar Niro anodized mat finish
seal profile:	high-grade silicone or high-grade self-extinguishing silicone
seal height:	up to 16 mm
sound absorption value:	48 dB at 7 mm clearance from door to floor, 46 dB at 14 mm clearance from door to floor
lift height adjustment:	on the release knob with an Allen key 3 mm
lengths in stock:	459, 584, 709, 834, 959, 1084, 1209, 1334 mm
special lengths:	on request up to 2000 mm, sliding doors up to 1600 mm
release:	unilaterally on hinge side
can be shortened:	up to 125 mm
fastening:	to be glued on
stopping plate:	stainless steel, to drive home, 20×20 mm
test approvals:	on request

For 1 and double wing/folding all-glass doors and for retrofitting of all other doors

Order specifications

- **Planet KG-S RD/48dB**
Part number 38 xxx*-S
- **Planet KG-S FH+RD/48dB**
Part number 39 xxx*-S
- **Planet KG-S sliding door**
Part number 37 xxx*-S

*xxx = refer to price list for profile lengths

Accessories / options

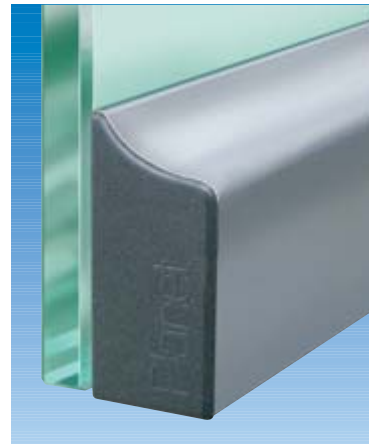
- **Planet stopping plate**
Part number 900 014
- **cut the Planet on fixed dimension**
Part number 900 225
- **set of cover plates Planet**
Part number 900 252
- **adhesive tape for Planet KG-S**
0,8×33×960 mm
Part number 900 221



Planet KG-S, pasted laterally



Planet KG-S, pasted laterally



Planet KG-S with cover plate on lock side



Assembly in all-glass doors and partitions



Planet KG-S application in an office building

SWISS MADE

► refer to chapter mounting instructions for further information of Planet KG-S