

Filigree design solution for 1 and double wing/folding all-glass doors, glass thickness more than 12 mm

Main features

- lift height 16 mm
- for 1 and double wing/folding all-glass doors of above 12 mm glass thickness
- Planet KG-U with UV cement on lower glass edge (building side)
- Planet drop-down seal cemented in U protection profile
- unilateral release with parallel drop-down
- does not trail on the floor
- automatic compensation to inclined floors
- acoustic isolation of 48 dB (at 7 mm clearance from door to floor)
- can be shortened to the next shorter length in stock
- high-grade silicone lip, simple lift height adjustment

Versions

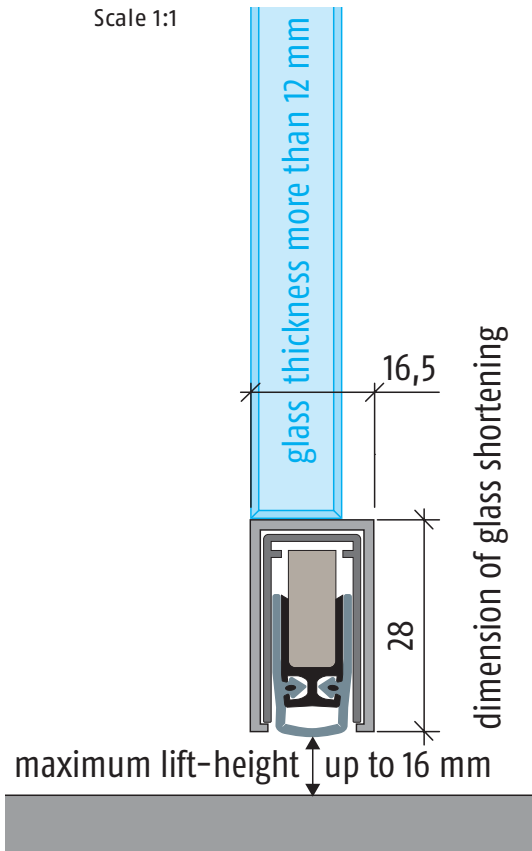
- **Planet KG-U**
- fire-retardant and smoke-shielding, **Planet KG-U FH+RD/48dB**
- sliding doors
- special versions on request

Surfaces

- colorless anodized EV1
- similar: Niro anodized mat finish



Scale 1:1



Advertising text

Planet KG-U

Automatic door drop-down seal **Planet KG-U**, unilateral release with parallel drop-down and automatic compensation in case of an inclined floor, protection profile colorless EV1 or similar Niro anodized mat finish, flush with surface to be applied with UV cement from the bottom, seal height up to 16 mm. Lip made of silicone. Protection profile and profile made from aluminum 16,5×28 mm, incl. covering plate on lock side (for double wing/folding doors).

Planet KG-U FH+RD/48dB, fire-retardant and smoke-shielding

Automatic door drop-down seal **Planet KG-U FH+RD/48dB**, suitable for fire-retardant and smoke-shielding doors. Sound absorption value SK 1-3, unilateral release with parallel drop-down and automatic compensation in case of an inclined floor, protection profile colorless EV1 or similar Niro anodized mat finish, flush with surface to be applied with UV cement from the bottom, seal height up to 16 mm. Lip made of self-extinguishing silicone. Protection profile and profile made from aluminum 16,5×28 mm, incl. covering plate on lock side (for double wing/folding doors).

Technical specifications

protection profile material:	aluminium 16,5×28 mm mm, colorless EV1 or similar Niro anodized mat finish
seal profile:	high-grade silicone or high-grade self-extinguishing silicone
seal height:	up to 16 mm
sound absorption value:	48 dB at 7 mm clearance from door to floor, 46 dB at 14 mm clearance from door to floor
lift height adjustment:	on the release knob with an Allen key 3 mm
lengths in stock:	459, 584, 709, 834, 959, 1084, 1209, 1334 mm
special lengths:	on request up to 2000 mm, portes sliding doors up to 1600 mm
release:	unilaterally on hinge side
can be shortened:	up to 125 mm
fastening:	to be glued on
stopping plate:	stainless steel, to drive home, 20×20 mm
test approvals:	on request

Filigree design solution for 1 and double wing/folding all-glass doors, glass thickness more than 12 mm

Order specifications

- **Planet KG-U RD/48dB**
Part number 38 xxx*-U
- **Planet KG-U FH+RD/48dB**
Part number 39 xxx*-U
- **Planet KG-U sliding door**
Part number 37 xxx*-U

*xxx = refer to price list for profile lengths

Accessories / options

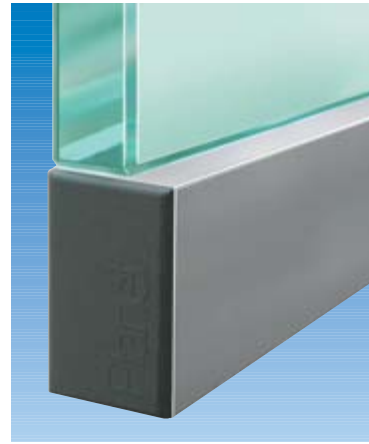
- **Planet stopping plate**
Part number 900 014
- **cut the Planet on fixed dimension**
Part number 900 225
- **set of cover plates Planet**
Part number 900 252



Planet KG-U, pasted from the bottom



Planet KG-U, pasted from the bottom



Planet KG-U with cover plate on lock side



Planet KG-U hinge



Planet KG-U application in an office building

SWISS MADE

► refer to chapter mounting instructions for further information of Planet KG-U